

WebRelay™ provides reliable remote relay control and discrete signal monitoring over any IP network. WebRelay™ can be used in countless applications, including pump and motor control, security lock systems, remote reboot, and lighting control. WebRelay's powerful and flexible design make imagination its only limit.

In addition to its built-in relay, WebRelay™ has an optically isolated input that can be used to monitor the state of devices, control the relay, or control a remote relay somewhere else on the network. This feature is useful to extend the output of a PLC to another building or to allow a switch or sensor to control a device at a distant location.

Features :

- No programming required.
- Full control using a standard web browser or text-based XML messages.
- Can operate as a Modbus/TCP slave.
- Password protected.
- 12-Amp relay contacts.
- On/Off and Pulse modes.
- Optically isolated input can be used for:
 - Monitoring
 - Relay control
 - Remote relay control (Peer to Peer)
- Automatic Reboot controller mode for remote reboot of computers and network devices.
- Selectable TCP ports.
- Two removable terminal connectors included.
- Rugged DIN-Rail/wall mountable enclosure.
- Three power supply options available:
 - 5 VDC
 - 9-28 VDC
 - Power-Over-Ethernet (802.3af)



Setup

Network
Password
Relay/Input
Control Page Setup
Relay Control Page

Relay/Input:

Relay Mode: Standard Automatic Reboot

Pulse Duration: 0.5 SECS

Relay Options: toggle relay when input off

Remote Relay Options: no remote relay control

Remote Relay IP Address: no remote relay control

Remote TCP Port: remote command equals input

Relay #: remote command opposite of input

Password: send on command when input on (no off command)

Keep Alive: send off command when input off (no on command)

Send pulse command when input on

Send pulse command when input off

Send pulse command when input changes

Send toggle command when input on

Send toggle command when input off

Send toggle command when input changes

remote relay equals local relay

Drop-down List for Controlling Remote Relays

Relay/Input:

Relay Mode: Standard Automatic Reboot

Ping IP Address: 192 . 168 . 1 . 2

Successful Ping Period: 120 SECS

Unsuccessful Ping Period: 30 SECS

Delay Before First Ping After Reboot: 5 SECS

Reboot Timer 1 (T1): 5 SECS

Reboot Timer 2 (T2): 5 SECS

Reboot Timer 3 (T3): 2 SECS

Reboot Options: pulse on T1 secs

Failed Pings Before Reboot: 5

Max Reboot Attempts: 10

Remote Relay Options: remote command equals input

Remote Relay IP Address: 192 . 168 . 1 . 95

Remote TCP Port: 80

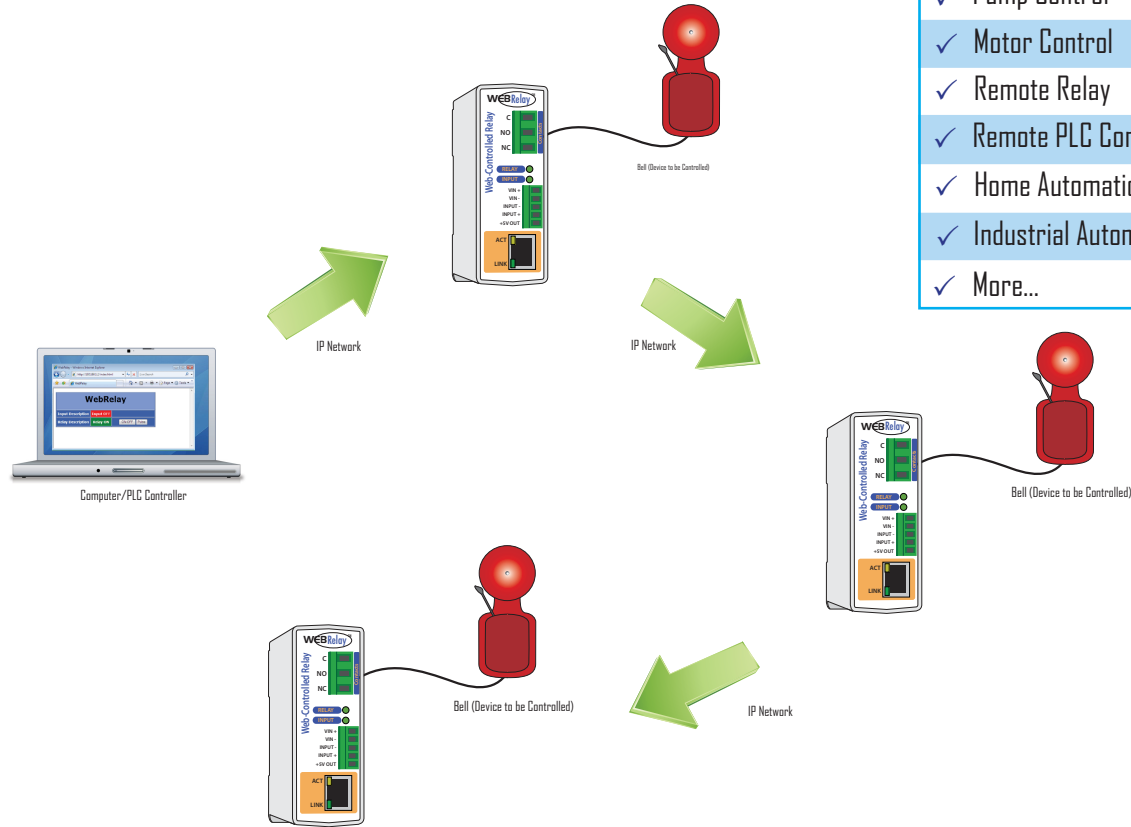
Relay #: 0

Password: *****

Keep Alive: YES(No TX State)

Automatic Reboot Options

Daisy Chained Control



Additional Applications:

- ✓ Remote Reboot
- ✓ Pump Control
- ✓ Motor Control
- ✓ Remote Relay
- ✓ Remote PLC Control
- ✓ Home Automation
- ✓ Industrial Automation
- ✓ More...

Power Requirements:

Model X-WR-IR12-115-5
Voltage: 5VDC ± 5%
Current: 166mA - 465mA*

Model X-WR-IR12-115-1 and X-WR-IR12-1124-1
Voltage: 9-28VDC
Current: 38mA - 313mA*

*Current based upon voltage applied and device settings.
See users manual for complete breakdown.

Model X-WR-IR12-115-E
Power Over Ethernet Option: PoE Class I
(0.44 to 3.84 Watts)

I/O: 1 Optically Isolated Input, 1 Relay Output

Relay Contacts:

Contact Form: SPDT (Form C)
Contact Material: AgSnO2
Max Voltage: 240VAC, 100VDC
Max Current: 12A
Relay Control Options: ON/OFF or Pulsed
Pulse Timer Duration: 100ms to 86400 Seconds (1 day)
Accuracy of pulse timer: 99.99%

Optically Isolated Input:

Input Voltage: (5V Input models)
 V_{High} : 3-12VDC
 V_{Low} : 0-1VDC
Input Current: 4.7mA - 25mA (5V Input models)
Input Voltage: (24V Input models)
 V_{High} : 11-28VDC
 V_{Low} : 0-1VDC
Input Current: 4.9mA - 13.4mA (24V Input models)
Input Isolation: 1500V
Input Functions: Monitor, Local Relay Control, Remote Relay Control
Input to Local Relay Settings: Equal, Invert, Toggle, Latch, Pulse, none
Input to Remote Relay Settings: Equal, Invert, Toggle, Latch, Pulse, None

Network:

10/100 Base-T Ethernet

Network Setup:

Static IP address assignment, HTTP port selectable

Connectors:

Power/Input: 5-position, removable terminal strip, 3.81mm terminal spacing
Relay: 3-position, removable terminal strip, 7.62mm terminal spacing
Network: 8-pin RJ-45 socket

LED Indicators: 4

- Input
- Relay Coil Energized
- Network Linked
- Network Activity

Physical:

Operating Temperature: -40°C to 65°C (-40°F to 149°F)
Size: 1.41in (35.7mm) wide
3.88in (98.5mm) tall
3.1 in (78.0mm) deep
Weight: 5oz (142 grams)
Enclosure Material: Lexan 940 (UL94 V0 flame rated)

Password Settings:

Password protection on setup page: Yes
Password protection on control page: Optional
Password Encoding: Base 64
Max password length: 10 characters

Regulatory Compliance:

Electromagnetic Compliance:
IEC CISPR 22, CISPR 24
FCC 47CFR15 (-1 and -5 Models class B, POE Model Class A)
EU EN55024, EN55022
Product Safety:
IEC 60950-1 / EN 60950-1